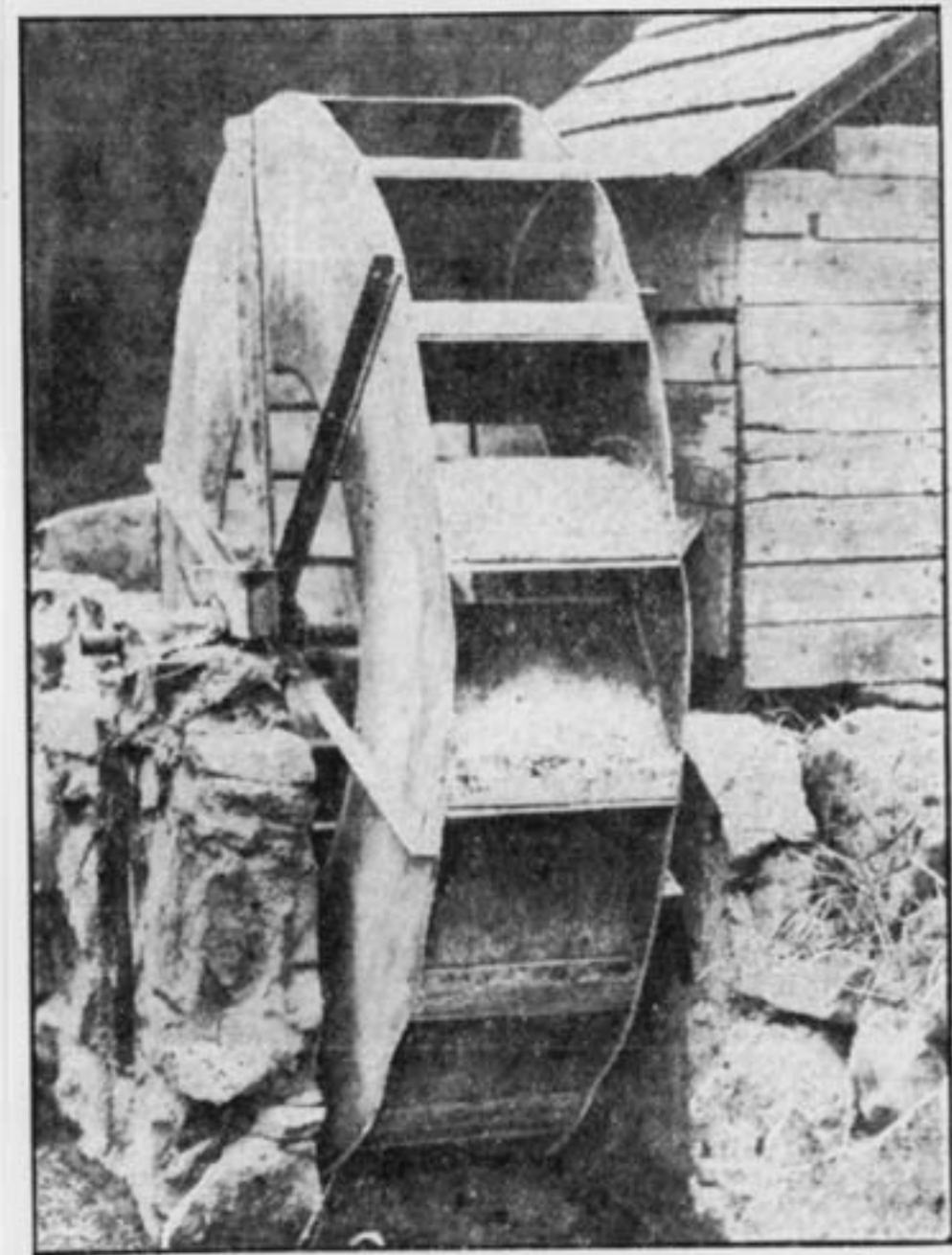


# The Beers Family

Glen Road resident LeRoy Beers was an early advocate of making the Corbett's Glen area into a park.

In 1926 the LeRoy Beers family purchased the Hagen home from the Hagen family. The Beers family had lived in the nineteenth ward in Rochester and wanted land to work with. This property nicely filled the need.



Water wheel which Leroy F. Beers has built on his property to put Allen's Creek to work. The wheel supplies power enough to pump 500 gallons of water a day.

Rochester Business Man Exercises His Engineering Hobby by Harnessing Allen's Creek for Duty, and Embellishment of His Brighton Home Grounds

Water pumps and irrigation 250-gallon tank full of water, except in the winter time. The wheel is between the creek bank and a 30-foot dam which provides water pressure to operate the appliance. For the last few days Mr. Beers has had the dam open to lower the pool, but otherwise the wheel functions daily. Keeps Two Fountains Playing Below the pool is a fountain operated by the wheel, and below that a second fountain, operated by the water dripping from the first. Standing near them, one hears the musical splash of waters continuously ascending in a graceful stream, and then lazily spraying down. And the water wheel has

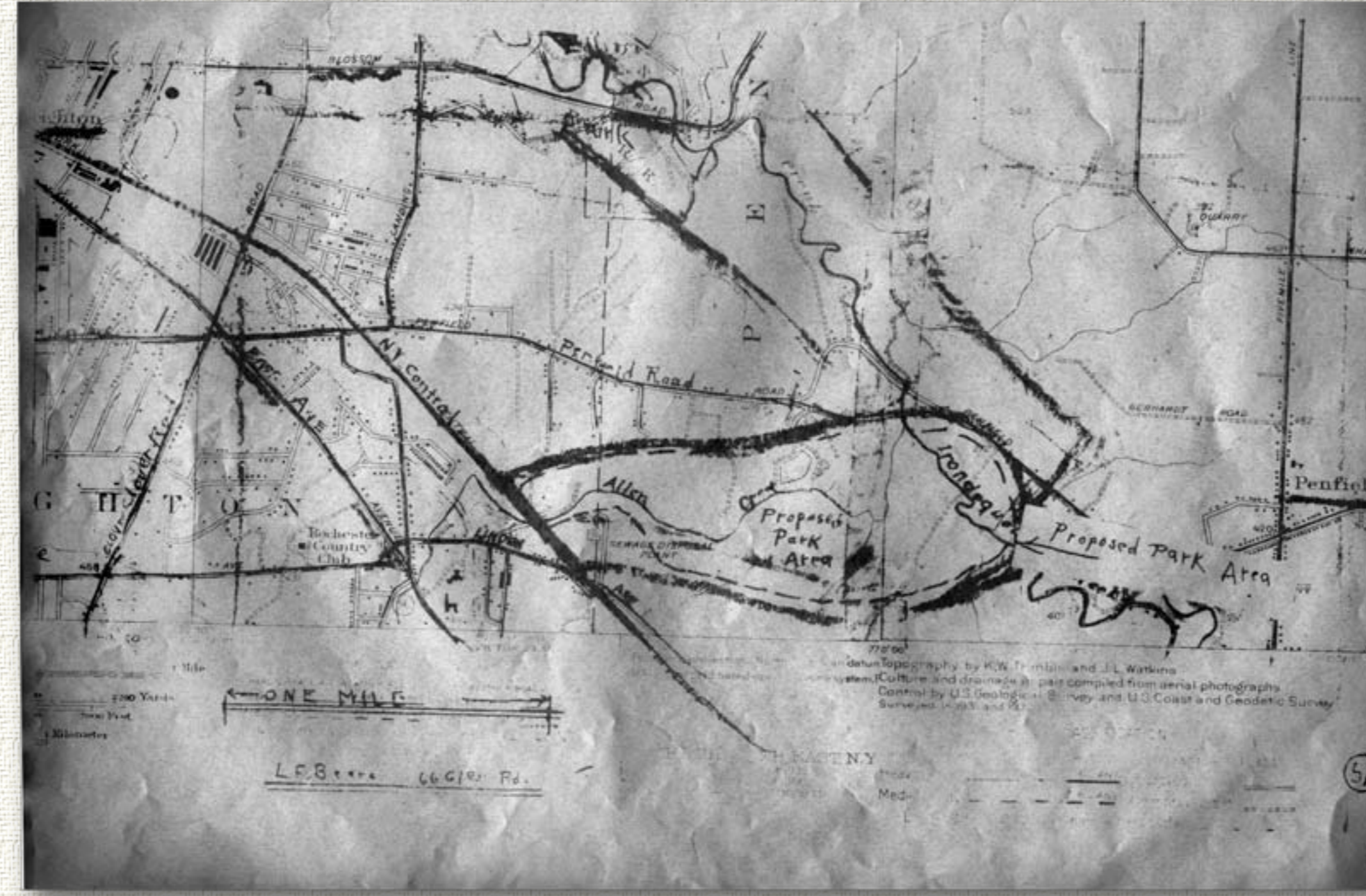
LeRoy, in the water pump business and an inveterate tinkerer, proceeded to improve the property – making a portion of it into an informal children's park. "Ellenbrook" is the name they gave to the park, after his wife Clara Ellen and his daughter Ellen. His daughter, granddaughter, and great-granddaughter still live on Glen Road.

No doubt, a clear vision came to mind when Mr. Beers first saw the place. These photos tell the story. He was in his element.

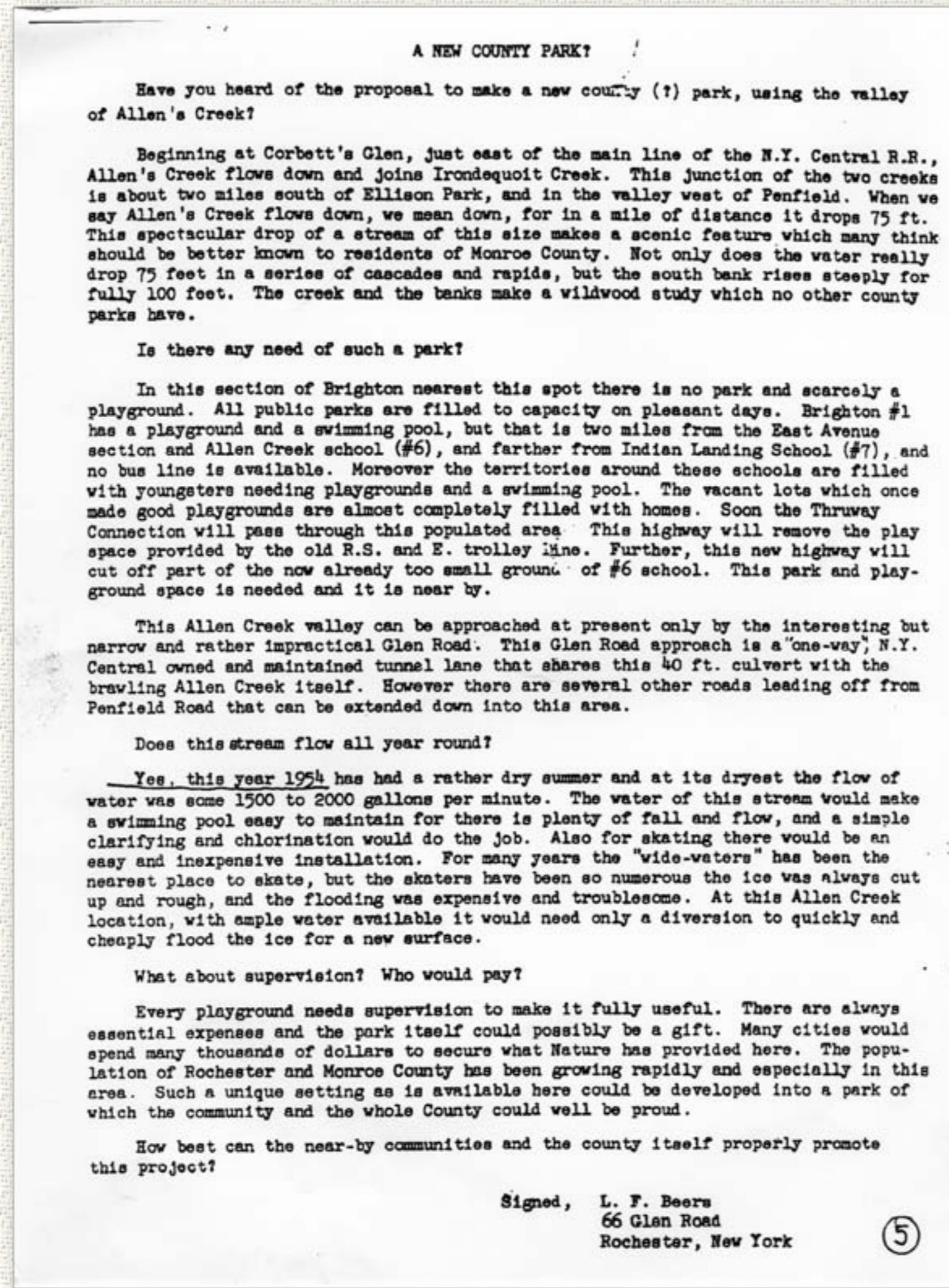
In 1954 Mr. Beers proposed a similar vision for the Corbett property. The Corbetts had ceased

farming by 1945 and family energy to run the picnic grounds business was diminishing.

Mr. Beers's vision is spelled out in the letter presented here. In the meantime, until Corbett's Glen could be made a park, "Ellenbrook" helped to meet the outdoor recreational needs of the children of the area.



Map of a 1954 proposal to make the glen and downstream Allens Creek valley into a county park.



The proposal for a park in the Allens Creek valley submitted by LeRoy Beers in 1954 to various county officials. His son, Robert L. Beers, Lt. Colonel, USAF (Retired), re-submitted the proposal in 1994.



A view of the garden fountain driven by the water wheel in the creek. The water pump was also used to irrigate the gardens.



LeRoy Beers – a happy man at play. The water wheel drove an electric generator and mechanically pumped water to an above-ground tank on the hill above the garden. The gravity-fed system was used for irrigation and two decorative fountains. One was in the garden and one in a goldfish pond on the lower level.

