

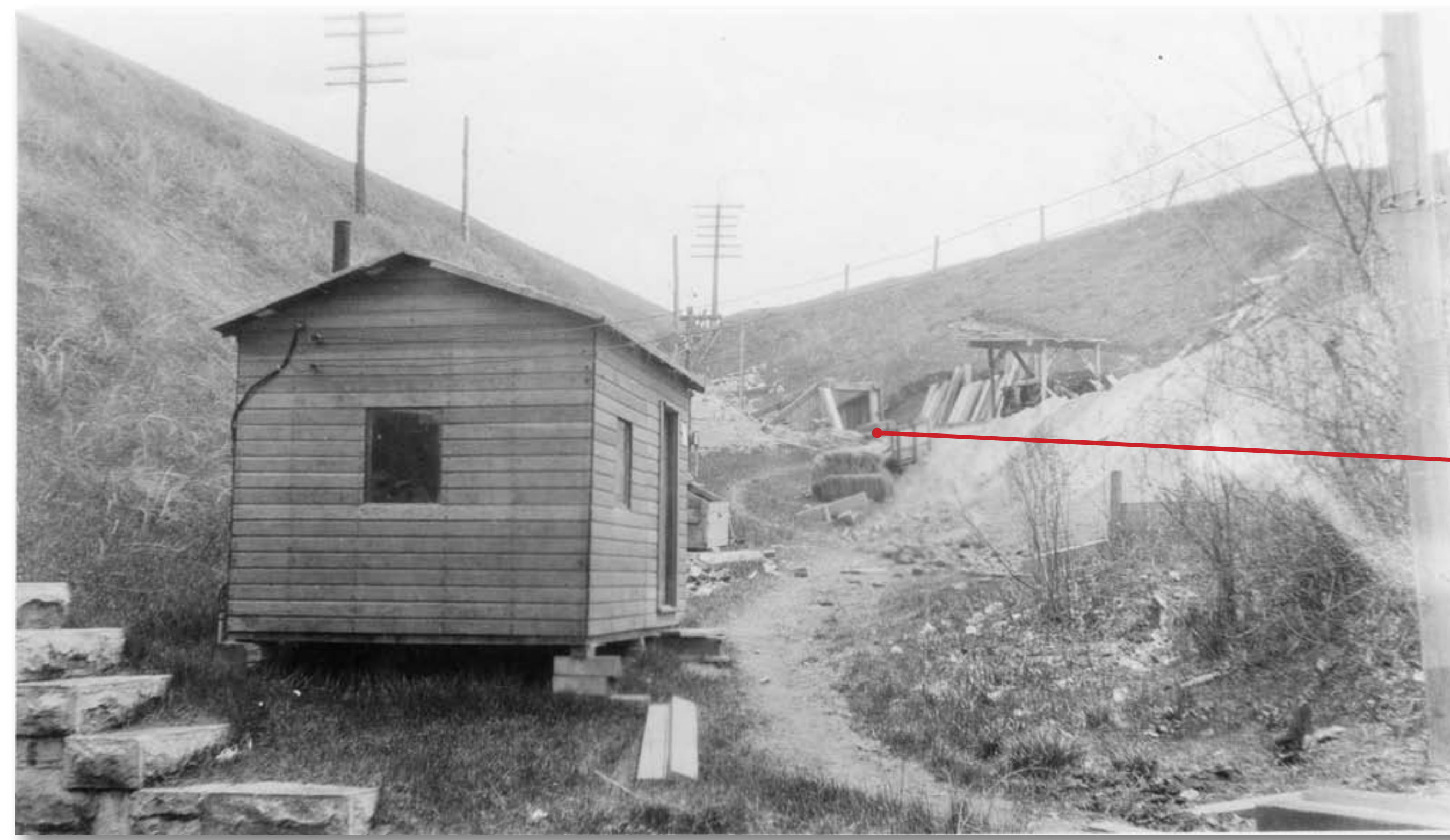
Another Tunnel Through the Embankment

1924

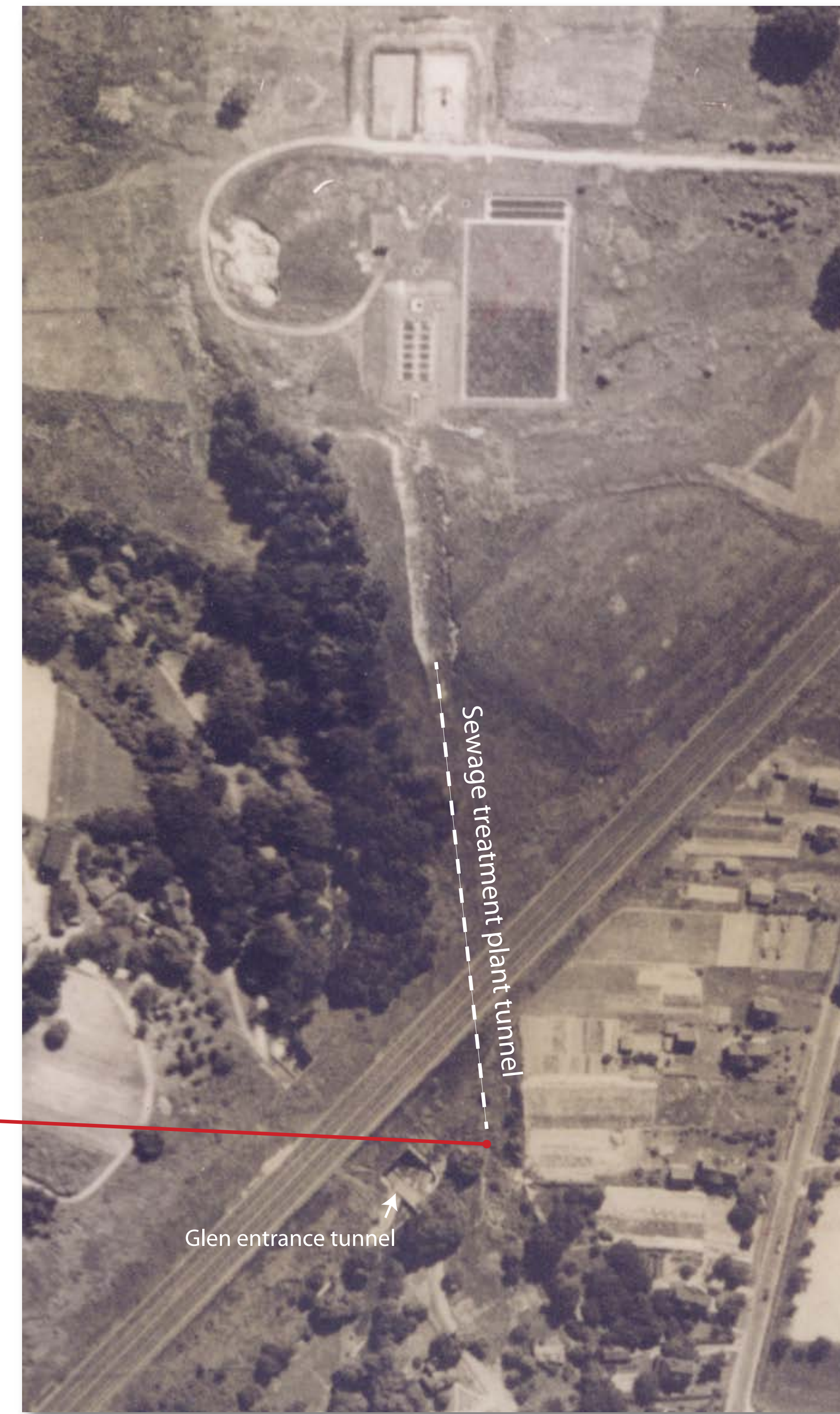
In 1924 the Town of Brighton was undertaking a first attempt to intercept waste water by constructing the District No. 2 Allens Creek Disposal Plant. Fortunately, thirty-six photos have survived that show this construction process.

It was necessary to construct a small tunnel diagonally through the embankment in order to put two 36 inch sewer pipes through to the other side. This tunnel was filled in around the pipes so that they were buried in the embankment.

The west entrance to this tunnel was located at the far corner of the lawn of this property, against the embankment.



This photo was taken from where you are standing



In this photo you can see the chicken farm that occupied the site that is now Harper's Mobile Home Park.



Both steam and horse power equipment were used in this 1923 - 1924 project.



The tunnel before the pipes were laid. Note the railroad tracks that were used during construction.



Workmen in the tunnel during construction

